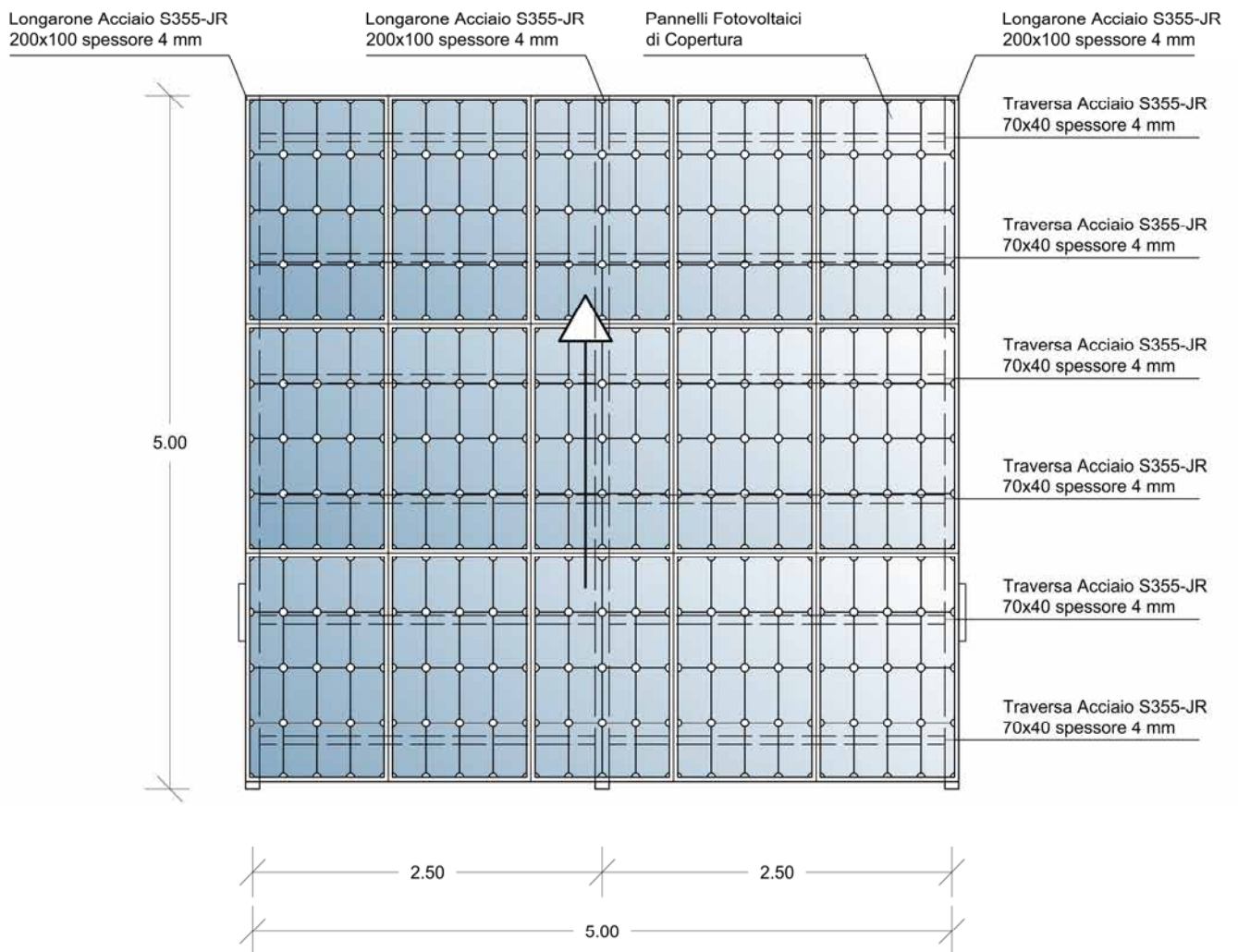


PENSILINA FOTOVOLTAICA

mod. SBALZO

scala 1:50



PLANIMETRIA

NOTE:

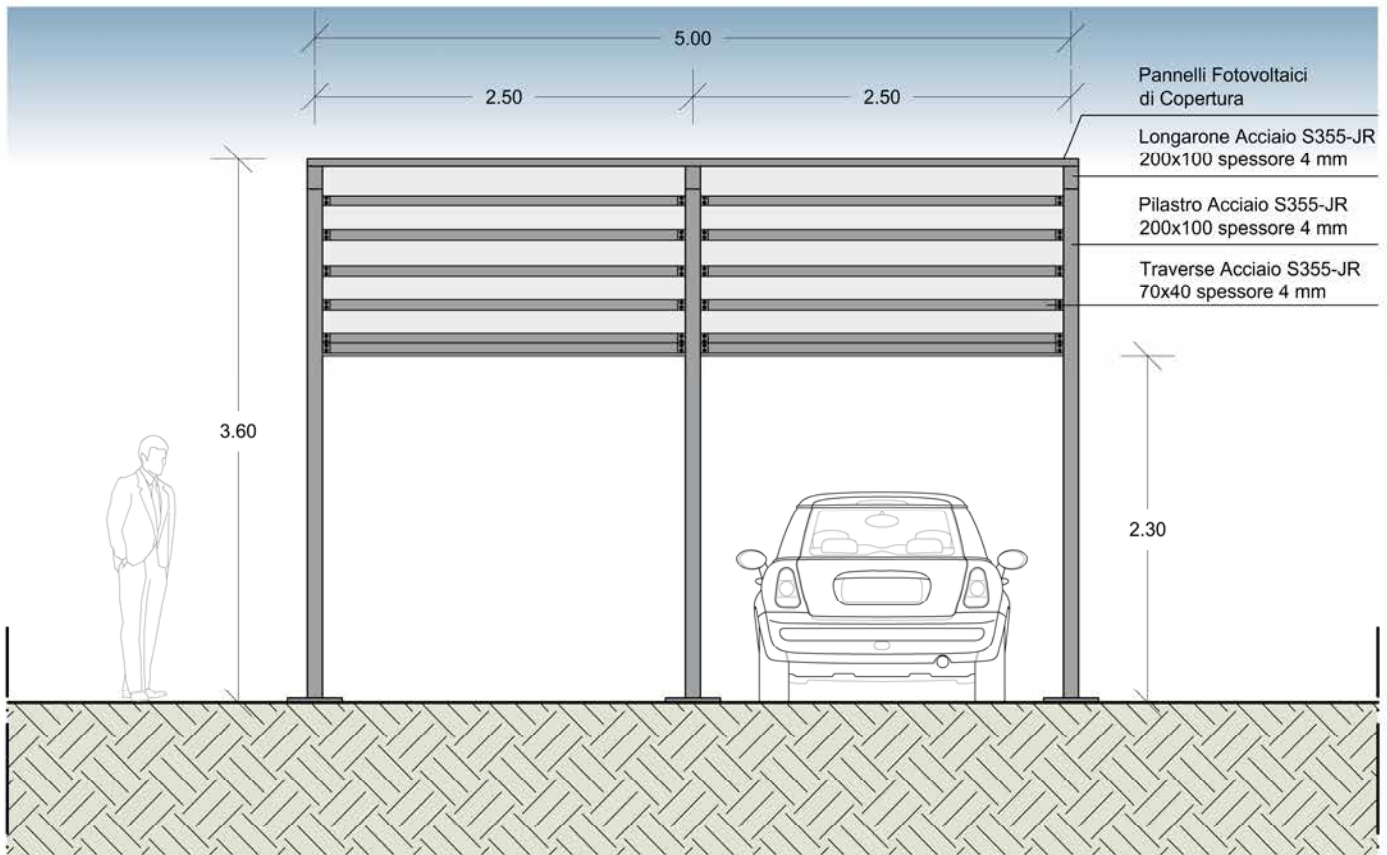
Classe di Esecuzione : EXC2 - EN 1090-1

Materiali impiegati: Profili in acciaio S355 JR
Piastrame vario Acciaio S275 JR
Bulloneria classe 8.8 secondo EN 15048

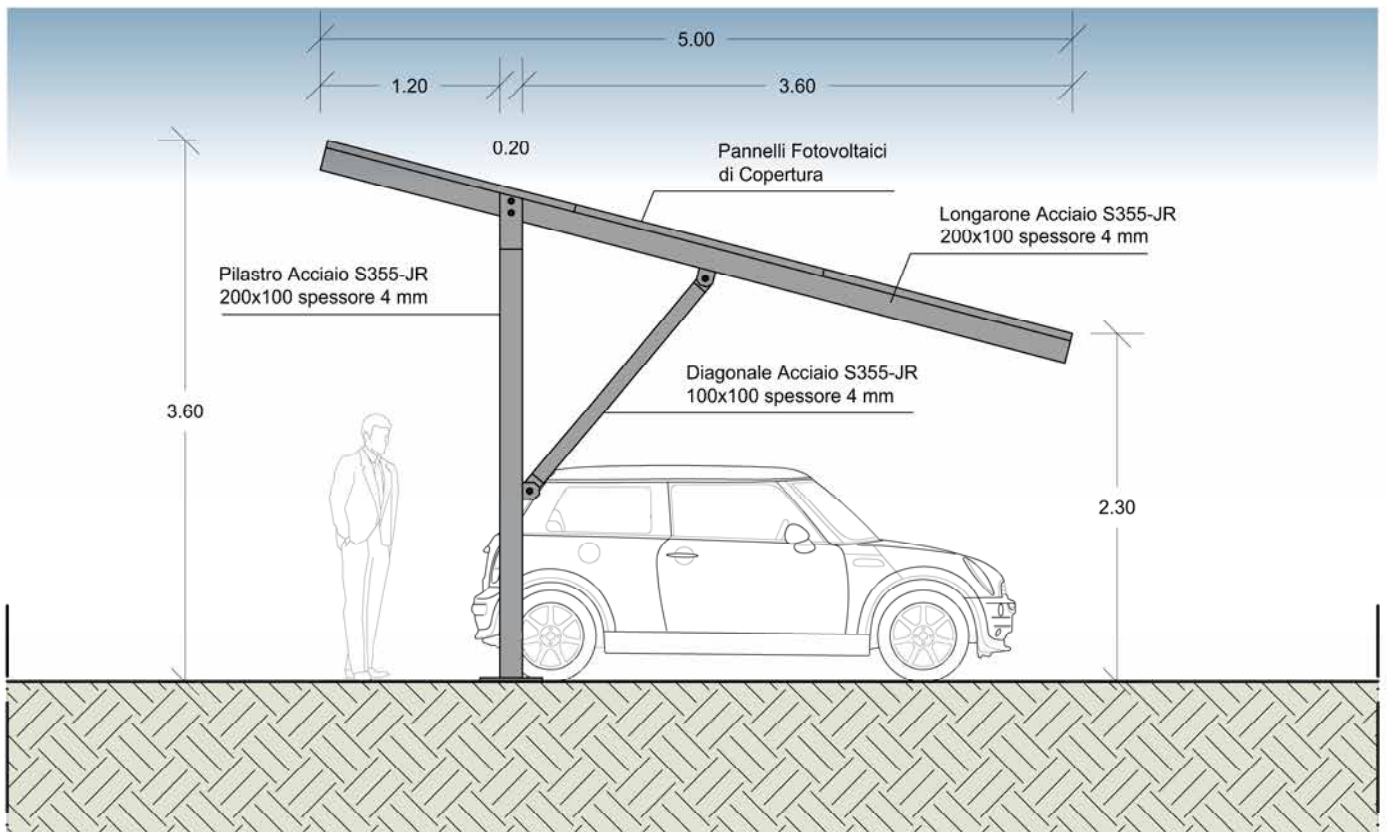
PENSILINA FOTOVOLTAICA

mod. SBALZO

scala 1:50



PROSPETTO FRONTALE



PROSPETTO LATERALE